

BOHEMIAN RHAPSODY

for Black Rock Philharmonic 2019

FREDDIE MERCURY

Arr. by Brian Adam McCune

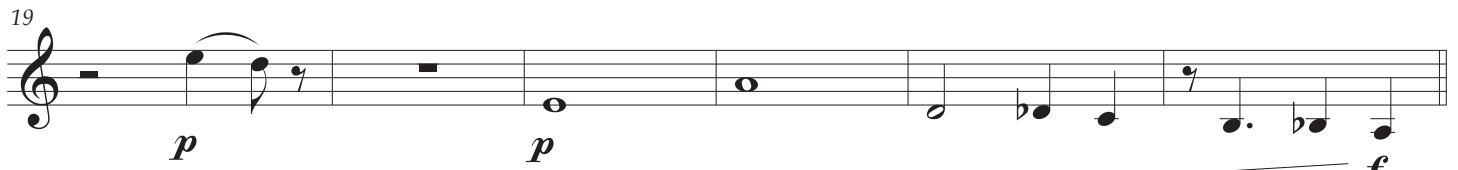
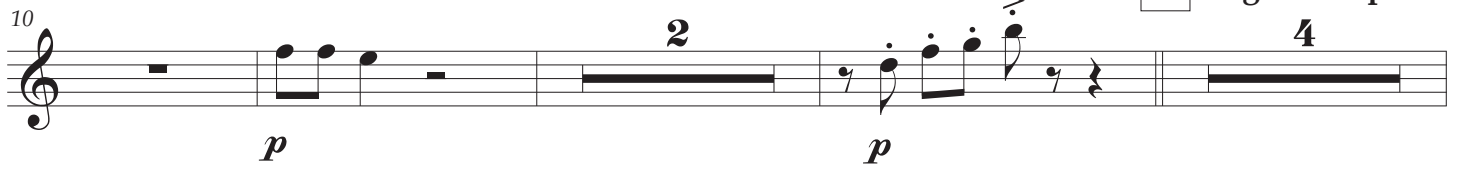
Slower than the Original ♩ = 60-63



A

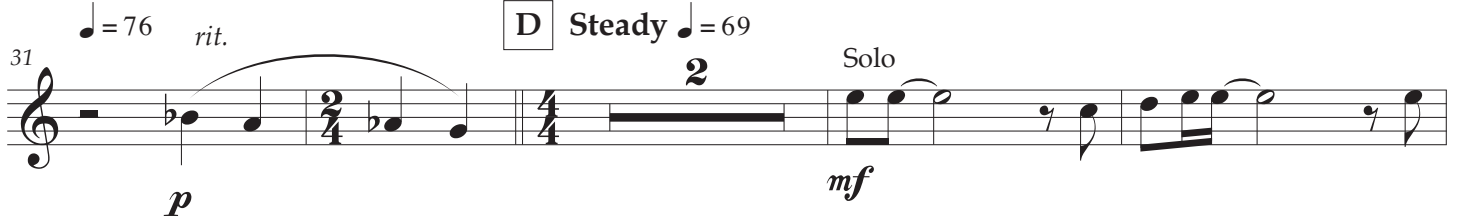
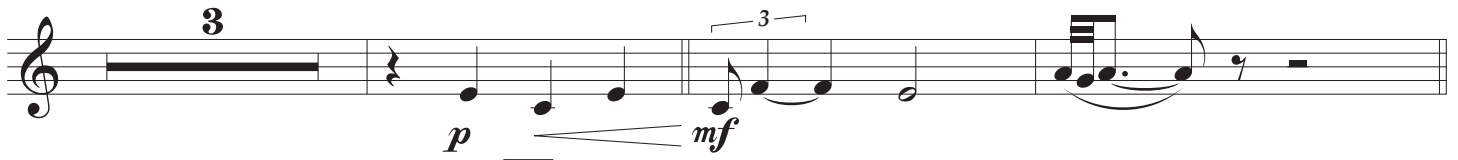


B Slight Bump ♩ = 69



C

Slowing ♩ = 60

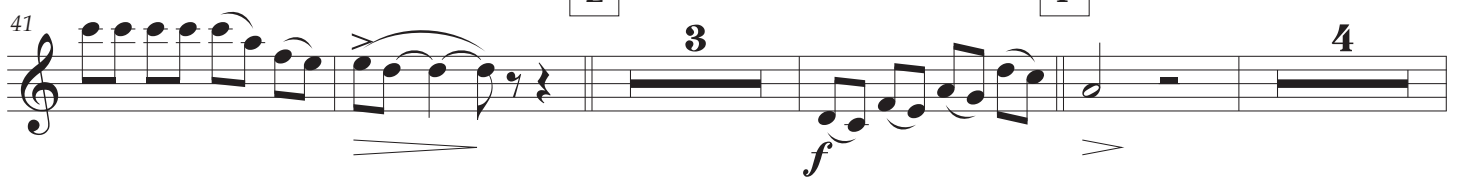


D Steady ♩ = 69



E

F



BOHEMIAN RHAPSODY - Clarinet in B \flat

Page 2 of 3

G Scaramouche $\text{♩} = 152$

52

52

ff

mf

mp

3

Detailed description: This staff contains measures 52 through 55. It begins with a treble clef and a key signature of one flat. The music starts with a forte (*ff*) dynamic, featuring a series of eighth notes with slurs. A triplet of eighth notes is marked with a '3' above it. The dynamic then changes to mezzo-forte (*mf*) and finally mezzo-piano (*mp*) for a single note. The staff ends with a double bar line.

56

56

10

H

mf

Detailed description: This staff contains measures 56 through 59. It starts with a treble clef and a key signature of three sharps. Measure 56 has a ten-measure rest marked with a '10' above it. Measures 57 and 58 are in 2/4 time, and measures 59 and 60 are in 4/4 time. The music consists of dotted quarter notes with accents (>). The dynamic is mezzo-forte (*mf*). The staff ends with a double bar line.

70

70

3

I

mf

Detailed description: This staff contains measures 70 through 73. It starts with a treble clef and a key signature of one flat. Measure 70 has a three-measure rest marked with a '3' above it. Measures 71 and 72 are in 4/4 time, and measures 73 and 74 are in 2/4 time. The music consists of eighth notes with slurs. The dynamic is mezzo-forte (*mf*). The staff ends with a double bar line.

77

77

2

f

Detailed description: This staff contains measures 77 through 80. It starts with a treble clef and a key signature of one flat. Measure 77 has a two-measure rest marked with a '2' above it. Measures 78 and 79 are in 2/4 time, and measure 80 is in 4/4 time. The music features eighth notes with slurs and accents (>). The dynamic is forte (*f*). The staff ends with a double bar line.

84

84

J

2

Detailed description: This staff contains measures 84 through 87. It starts with a treble clef and a key signature of one flat. Measure 84 has a two-measure rest marked with a '2' above it. Measures 85 and 86 are in 5/4 time, and measure 87 is in 4/4 time. The music consists of eighth notes with slurs. The dynamic is mezzo-forte (*mf*). The staff ends with a double bar line.

91

91

mf

f

p

f

Detailed description: This staff contains measures 91 through 94. It starts with a treble clef and a key signature of one flat. Measure 91 is in 2/4 time, and measures 92 and 93 are in 4/4 time. The music consists of eighth notes with slurs. The dynamic starts at mezzo-forte (*mf*), then changes to forte (*f*), then piano (*p*), and finally back to forte (*f*). The staff ends with a double bar line.

BOHEMIAN RHAPSODY - Clarinet in B \flat

Page 3 of 3

K Headbanging $\text{♩} = 144$

Musical notation for section K, measures 103-106. It features a 4-measure rest followed by a half note G3, then eighth notes A3, B3, C4, and D4. Measure 105 has a 2/4 time signature change, and measure 106 has a 4/4 time signature change and a half note G3. Dynamics are *mf*.

Musical notation for section L, measures 107-112. It starts with eighth notes G3, A3, B3, C4, D4, E4, F4, G4. Measure 110 has a triplet of eighth notes G4, A4, B4. Measure 111 has a 2-measure rest. Measure 112 has a 2-measure rest. Dynamics are *mf*.

Musical notation for section M, measures 113-117. It features eighth notes with triplets. Measure 113 starts with *mf*, measure 114 with *f*, and measure 117 with *f*. Measure 115 has a 2-measure rest. Dynamics are *mf*, *f*, *f*.

Musical notation for section M, measures 118-123. It features eighth notes with triplets. Measure 123 has a 3-measure rest. Measure 124 has a 3/4 time signature change, and measure 125 has a 2/4 time signature change. Dynamics are *f*. Tempo marking: *molto rit.*

N Mercurial $\text{♩} = 64$

Musical notation for section N, measures 124-127. It starts with a 2/4 time signature change, followed by a 4-measure rest, then eighth notes G3, A3, B3, C4, D4, E4, F4, G4. Measure 127 has a 4-measure rest. Dynamics are *f*.

Musical notation for section N, measures 128-132. It starts with a 4-measure rest, then eighth notes G3, A3, B3, C4, D4, E4, F4, G4. Measure 132 has a 4-measure rest. Dynamics are *p*, *mf*, *p*. Tempo marking: *rit.*

O Wistfully $\text{♩} = 58$

Musical notation for section O, measures 133-137. It starts with a 4-measure rest, then eighth notes G3, A3, B3, C4, D4, E4, F4, G4. Measure 137 has a 4-measure rest. Dynamics are *mp*. Tempo marking: *rubato*, *molto rit.*